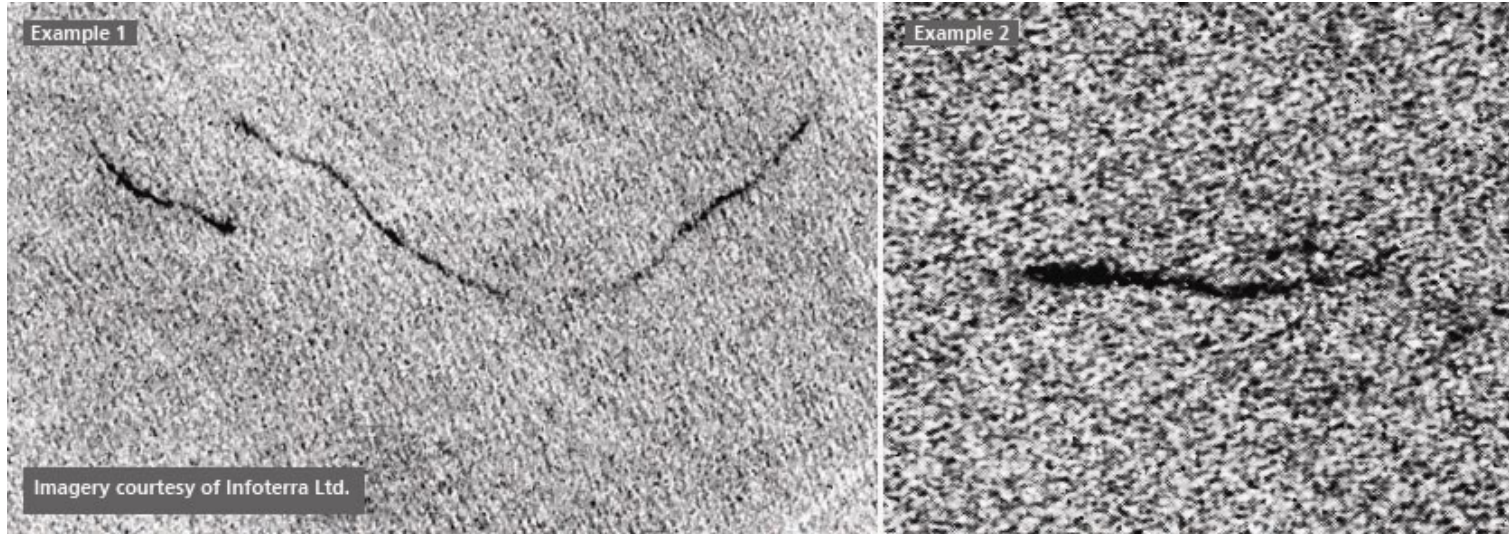


Satellite Seep Study Area



The regional oil seep mapping and interpretation study of offshore Newfoundland and Labrador will cover all offshore areas of Newfoundland and Labrador, linking into southwest Greenland. In total, the study will cover over 1,500,000 square kilometers.

Seepage Slick Image



Potential seepage slicks offshore Labrador from Infoterra's historical Global Seeps coverage

Copyright: Example 1 is ERS 1 © ESA, Gatineau (1993), Distributed by Eurimage